

petAngel™

Be Certain  
your pet is  
in the best  
of care.



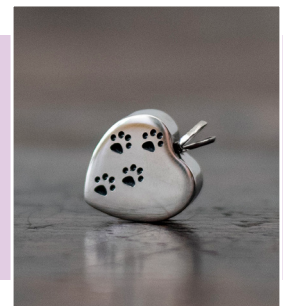
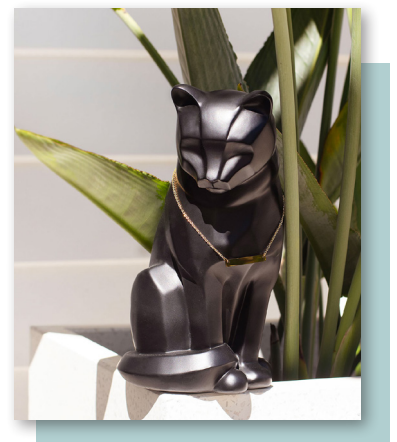
Pet Angel is an independent, family-owned, and operated pet crematorium offering professional, door-to-door, dignified cremation services.

## ABOUT PET ANGEL

Pet Angel began in 2015 with the vision to enhance the industry standard through a strong moral and ethical approach, while giving you the opportunity to celebrate your precious pet's life with the grace and dignity they deserve.

We provide a full door-to-door service, offering cremation packages and memorial products that are suitable for cats, dogs, guinea pigs, birds, and other small pets at our on-site crematoriums.

With Pet Angel, you can be certain and feel at ease knowing that your pet will receive the best care. Visit our website to find out more.



1800 738 264

[petcare@petangel.com.au](mailto:petcare@petangel.com.au)

[www.petangel.com.au](http://www.petangel.com.au)

Gold Coast: 3/21 Expansion St, Molendinar 4214 QLD

Brisbane: 9/66 Pritchard Rd, Virginia 4014 QLD

Servicing Gold Coast, Brisbane, Moreton Bay Region,  
Ipswich, Northern Rivers, and surrounding suburbs.



YOUR LOCAL, FAMILY OWNED



petAngel™

P E T C R E M A T I O N



1800 738 264

your pet is in the best of care. *Be Certain!*





## ABOUT PET ANGEL

---

Pet Angel began in 2015 with the vision to modernise and enhance the industry standard through a strong moral and ethical approach. We are an independent, family-owned and operated business with a team of dedicated pet lovers that treat every pet with the love and respect they deserve.

We are here to support you through every step of the journey, making it as seamless as possible, providing a full door-to-door service. We offer cremation packages that are suitable for cats, dogs, guinea pigs, birds, and other small pets at our on-site crematoriums.

Our service areas include Gold Coast, Brisbane, Moreton Bay Region, Ipswich, Northern Rivers, and surrounding suburbs.



*View our virtual tour*

# WHY CHOOSE US?

---

Pet Angel's state-of-the-art equipment and modern facilities ensure the highest standards of service. Each facility is equipped with specialised pet cremators, providing 100% individual cremations and guaranteeing that you will receive only your pet's ashes. They also feature a beautiful Remembrance Room to offer a peaceful farewell for you and your family, speak to our friendly team about arranging a viewing prior to cremation. You are welcome to visit our facilities during office hours.

Our professional staff follow meticulous procedures, including a unique 8-step checking system that begins the moment your pet is in our care. Our custom-fit vehicles are designed for the safe transportation of your pet, equipped with GPS tracking for efficient collection times and accurate monitoring of your pet's location at all times.

With Pet Angel, you can be assured that your pet will receive the highest level of care.

*"I cannot say enough nice things about Pet Angel. We have had to use them a couple of times now and will continue to use them in the future. Their entire staff are amazing, helpful, compassionate and professional. Thank you Pet Angel for making the difficult times of losing our hairy loved ones a little more bearable."*

*- Clancy (via Google review)*





# THE PROCESS...

---

## 1. Arrange Collection

We can bring your pet into our care from your home or veterinary clinic. Let us know when you would like us to arrive, or we can arrange to be there as soon as possible.

## 2. Choose Package and Products

All that we require you to do is choose which cremation package you would like, and if you would like any additional memorial products or special requests.

## 3. Make Arrangements

Once your pet is in our care, you will receive a phone call from Pet Angel the following business day to make cremation arrangements.

## 4. Finalise Arrangements

Our friendly staff will then explain the rest of the process and how we move forward from your chosen items.

## 5. Receive Your Pet

We will personally deliver your cherished pet's ashes and their products home to you. You are also welcome to collect them from one of our facilities or your chosen veterinary clinic.



# PACKAGE PRICING & GUIDE

Service	Price				
	Petite	Small	Med	Large	X-Large
	0-1kg	2-9kg	10-25kg	26-45kg	46kg+
Scatter Box	\$280	\$390	\$430	\$450	\$490
Cat Urn (Small only)		\$449			
Wooden Urn	\$319	\$420	\$460	\$480	\$520
Wooden Photo Urn	\$349	\$450	\$490	\$510	\$550
Terrazzo Outdoor Urn	\$340	\$440	\$470	\$480	\$520
Traditional Urn	\$434	\$540	\$580	\$590	\$630

View all packages and products on the following pages.

# INCLUDED

## Collection

Guaranteed Individual Cremation

1x Ink Paw Print on card  
(Additional Paw Prints \$5)

1x Lock of fur

(Additional Locks of Fur \$5)

Certificate of Cremation

Personalised Engraved Plaque

Crystal Guardian Angel Memento

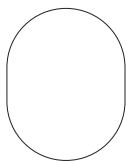
Delivery





## SCATTER BOX

The perfect option if you would like to scatter your pet's ashes. A glossy white cardboard box where you are able to easily remove the lid to scatter, or transfer the ashes into your own urn or memorial product.



White



### Individual Cremation with Scatter Box

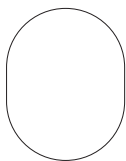
Petite	Small	Medium	Large	X-Large
0-1kg	2-9kg	10-25kg	26-45kg	46kg+
\$280	\$390	\$430	\$450	\$490





## CAT URN

Display in your home or nestled in a private nook of remembrance, our Cat Urns serve as a timeless tribute to your beloved feline friend. Includes a delicate bar-necklace plaque available in gold or silver.



White



Black



Individual Cremation with Cat Urn - Only available in Small

\$449



## WOODEN URN

Available in various sizes to accommodate all pets. The lid securely fastens to the base providing a secure resting place. Made by Pet Angel.

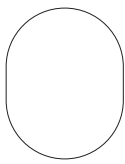
Available to be personalised with a photo.



Teak



Walnut



Pure



Ebony



### Individual Cremation with Wooden Urn

Petite 0-1kg	Small 2-9kg	Medium 10-25kg	Large 26-45kg	X-Large 46kg+
\$319	\$420	\$460	\$480	\$520

### Individual Cremation with Wooden Urn - With Photo

\$349	\$450	\$490	\$510	\$550
-------	-------	-------	-------	-------

Add an additional photo on the back for \$30

## PHOTO REQUIREMENTS

---

Our in-house graphic designer can help amend your image to fit the shape of the urn. All we ask is that you provide an image that is:

- Un-cropped
- Landscape (if possible)
- The largest possible size
- Not too close-up to ensure we have plenty of background to allow room for cropping to fit the shape of the urn

If you are struggling to find a suitable image, you are welcome to send through multiple images and our designer can help you. Some editing fees may apply.

Email your image to: [petcare@petangel.com.au](mailto:petcare@petangel.com.au)







## TERRAZZO URN

Terrazzo urns are strong and durable which makes them suitable for both indoor and outdoor positioning.

Each urn includes a plaque and are sealed closed.



White



Black



Pink



### Individual Cremation with Terrazzo Urn

Petite 0-1kg	Small 2-9kg	Medium 10-25kg	Large 26-45kg	X-Large 46kg+
\$340	\$440	\$470	\$480	\$520



## TRADITIONAL URN

Crafted from metal, traditional urns include a secure screw-top lid which provides a tight seal. Includes an engraved personalised plaque.



Slate



White



Pewter



### Individual Cremation with Traditional Urn

Petite 0-1kg	Small 2-9kg	Medium 10-25kg	Large 26-45kg	X-Large 46kg+
\$434	\$540	\$580	\$590	\$630



## MEMORIAL PRODUCTS

---

A comforting way to celebrate the love, joy, and companionship your pet brought into your life. Browse our collection today and find the perfect tribute to honour your best friend's memory.

Prices of memorial products do not include the cremation.



## LOCKETS: \$79

---

Memorial lockets hold a small portion of your pet's ashes, allowing you to keep them close to you wherever you go. Made from durable stainless steel, it features a secure screw or screw-top closure and then glued closed to keep ashes safe.



Silver Heart



Gold Heart



Angel



Cylinder



Cross



Teardrop

## KEYRING LOCKET: \$89

---

Our Keyring Locket for Ashes includes a tag with your pet's name engraved – a timeless keepsake.





## MEMORIAL CANDLE: \$25

---

Locally crafted with care, this soy candle serves as a beautiful tribute to honour those who have passed away. Fill your room with the lovely scents of “Guava Lychee” or “Vanilla Caramel”

## KEEPSAKE URN: \$69

---



Silver



Slate



Pewter

Presented in a velvet box with a name plaque. Standing at only 7cm tall, they are perfect for petite pets, or to hold a small portion of ash.



## MEMORY BEAR: \$99

---

Memory Bears hold a portion of ash inside their red tin heart and are personalised with your pet's name.

Choose a shirt colour: Pink, Purple, Blue



## DESK FRAME RANGE

Our desk frames provide the perfect platform to showcase treasured mementos that hold special significance. Choose from one of our prints or castings.

Photo not included with frame.



A. Ink Paw Print

\$88



B. Clay Paw Print

\$99



C. Petite Pet Print

\$99



D. Nose Casting

\$159





## CASTING:



Silver



Gold



White

## FRAME:



White



Black

## PAW CASTINGS

Our in-house Paw Casting's are a three-dimensional replica of your pet's paw or nose created by making a mold and then filling it with a stone casting material. Paw Castings can be customised. Speak to our friendly team to arrange a quote.



## PAW CASTING FRAME

Shadow Box Frame with 2x Paws  
No Photo: \$390 With Photo: \$430

Shadow box frames are available with or without a photo. The orientation of the frame is determined by the provided photo.

All frames include a 2-lined personalised engraved plaque.

Please email your photo to: [petcare@petangel.com.au](mailto:petcare@petangel.com.au)



### BASE:



Teak



Walnut



Black



White



## OTHER CASTINGS

Mounted Base with Plaque (Pictured above)  
Nose: \$159 Paws: \$370 Nose & Paws: \$450

Freestanding Paws  
1x Paw: \$145, 2x Paws: \$210

Larger pets may incur an additional materials fee.

# GRIEF SUPPORT

---

Losing a cherished pet can be heart-breaking, they are a part of our family. They help us through sadness, bring us companionship, and bring joy into our lives. So, when a pet passes away, grief is felt by the whole family.

There are no rules to grief, everyone is different when it comes to grieving and the healing process. Some people may take weeks or months before the sadness fades, where others may take years. Whatever the circumstances of your loss, remember that grief is personal to you, so you shouldn't be ashamed about how you feel, or believe that it's somehow not appropriate to grieve for an animal friend.

There are many reasons for the pain that we feel when our beloved companion passes away, the companionship they share, the unconditional love and joyful moments they give, and even something as simple as a daily routine.

Grief can be complicated by a number of additional factors like guilt or regret, thinking you hadn't done enough for your pet or wondering if it was the right time to say goodbye. It is important to remember that it is all a part of grief.

If you are experiencing grief just know that you are not alone and there is always someone there to help.

**24/7 Pet Loss Support Line:** 1300 431 450

[www.petsandpeople.com.au](http://www.petsandpeople.com.au)

**Lifeline:** 13 11 14

**Griefline:** 1300 845 745

**Beyond Blue:** 1300 224 636



The stages of grief are a framework to understand the emotional journey that individuals may go through when faced with loss. These stages are:

**Denial:** The initial stage where individuals may refuse to accept the reality of the situation. This can serve as a defense mechanism to protect oneself from overwhelming emotions.

**Anger:** As the reality sets in, individuals may experience anger. They might direct this anger towards themselves, others, or even the situation or circumstance that caused the grief.

**Bargaining:** In this stage, individuals may attempt to negotiate or make deals to try to avoid the pain of the loss. This can involve seeking ways to change the outcome or making promises in exchange for relief from the grief.

**Depression:** As the full weight of the loss becomes apparent, individuals may experience deep sadness, emptiness, and despair. This stage involves coming to terms with the reality of the loss and mourning what has been taken away.

**Acceptance:** The final stage involves coming to terms with the reality of the situation and finding a way to move forward. It doesn't mean that the grief is completely gone, but rather that individuals have found a way to integrate the loss into their lives and continue living in spite of it.

It's important to note that not everyone experiences these stages in a linear fashion or in the same way. Grief is a highly individual process, and people may move back and forth between stages or experience them in different intensities.



## CONTACT US

**PHONE 1800 PET ANGEL**

(1800 738 264)

**Available 7 Days a Week**

*After hours collection fee may apply*

**Email:** [petcare@petangel.com.au](mailto:petcare@petangel.com.au)



[www.petangel.com.au](http://www.petangel.com.au)

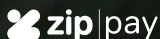
## LOCATIONS

### **GOLD COAST:**

3/21 Expansion Street,  
Molendinar QLD 4214

### **BRISBANE:**

9/66 Pritchard Road,  
Virginia QLD 4014



Prices valid 1st July 2024 - 1st January 2025